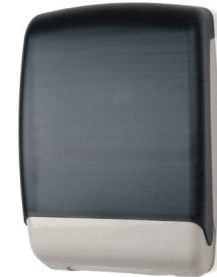


Towel & Tissue

Multi-Fold Towel

1-ply White Multi-Fold Towel



99903: Multi-Fold Towel Dispenser
Weight: 13 lbs
Units/Case: 6
Case Length: 23.25"
Case Width: 14.75"
Case Height: 17.25"

- High quality embossed towel
- Fits in most multifold dispensers
- Reliable performance at a low cost
- Economical white multifold towels have a low per-unit cost
- Chlorine free
- Perfect for washrooms in office buildings, foodservice facilities, public facilities, government facilities, lodging, etc.
- Made with 100% recycled fibers
 - 80% post-consumer
 - 20% pre-consumer



Multi-Fold Towel Outer Case

White Multi-Fold Towel

Product Number:	183203
Sheet Size:	9" x 9.5"
Towels Per Pack	250
Packs Per Case:	16
Color:	White
Cases Per Pallet	70
TI:	7
HI:	10
Case Dimensions:	20.63" Length
	13.25" Width
	9.13" Height
Case Weight:	18.5
Pallets Per Truck:	30
UPC:	705105611273

To order, contact

Towel & Tissue


- High quality & extra soft
- Made with 100% recycled fibers




	Kraft Multi-Fold Towel (250 ct)
	Product Number: 183204

	White Multi-Fold Towel (250 ct)
	Product Number: 183203


	Kraft Single Fold Towel (250 ct)
	Product Number: 183226

	White C-Fold Towel (200 ct)
	Product Number: 183223

	Kraft Hard Wound Towel (350')
	Product Number: 183208


	White Hard Wound Towel (600')
	Product Number: 183212


	Kraft Hard Wound Towel (600')
	Product Number: 183217


	White Hard Wound Towel (700')
	Product Number: 183210


	Kraft Hard Wound Towel (800')
	Product Number: 183213


	White Hard Wound Towel (800')
	Product Number: 183211


	2-ply White Center Pull Towel (600 ct)
	Product Number: 183260

	2-ply Kitchen Towel (85 ct)
	Product Number: 183264

	2-ply Bath Tissue (375 ct)
	Product Number: 183223

	2-ply Bath Tissue (500 ct)
	Product Number: 183011

	2-ply Jumbo Roll Bath Tissue (725')
	Product Number: 183014

	2-ply Jumbo Roll Bath Tissue (1000')
	Product Number: 1832161

Packaged in plain kraft boxes with generic labels

To order, contact